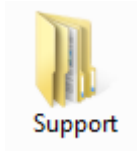
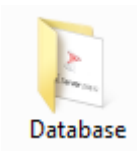


# ProtoCOL 3 SQL Engine Installation Quick Guide

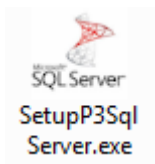
## 1 Install SQL Server



➔ Open the Support folder

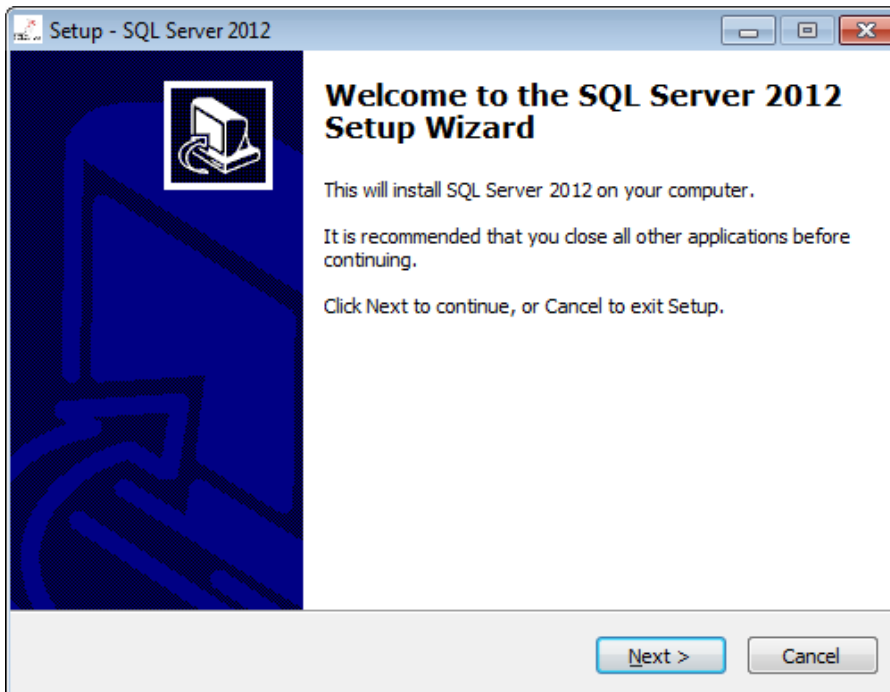


➔ Open the Database folder



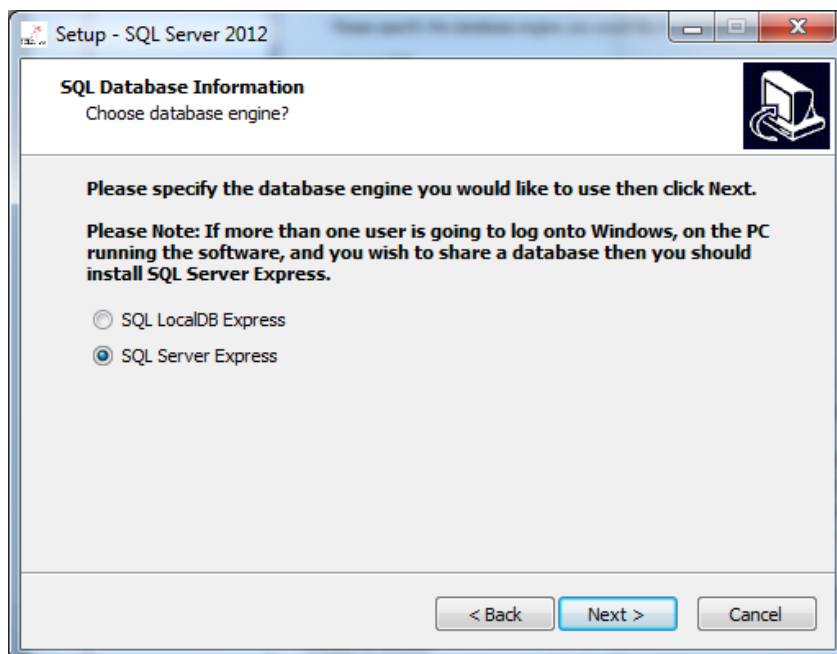
➔ Run SetupP3SqlServer.exe

## 2



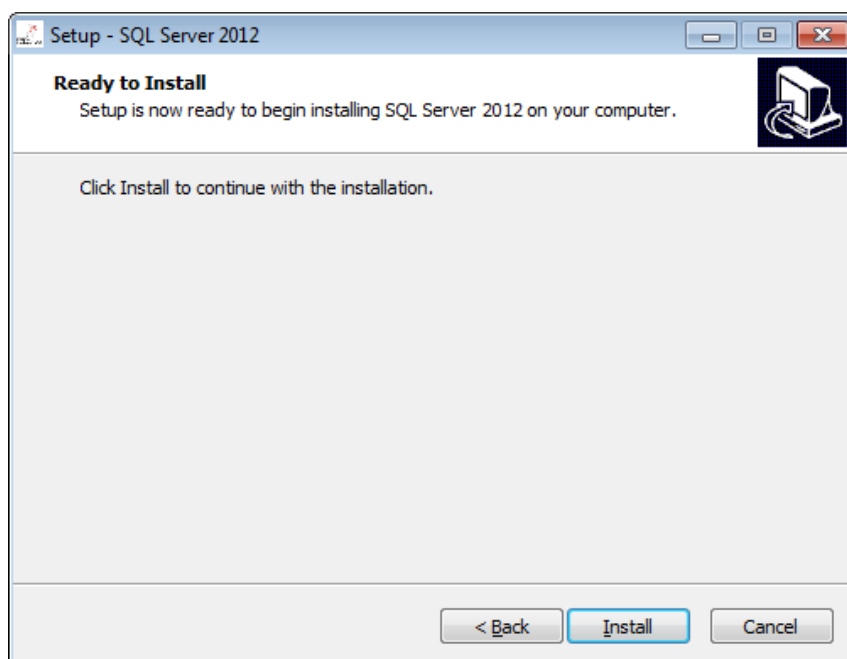
Start screen for installation of SQL Server Express and/ or SQL LocalDB Express. Press Next to continue.

3



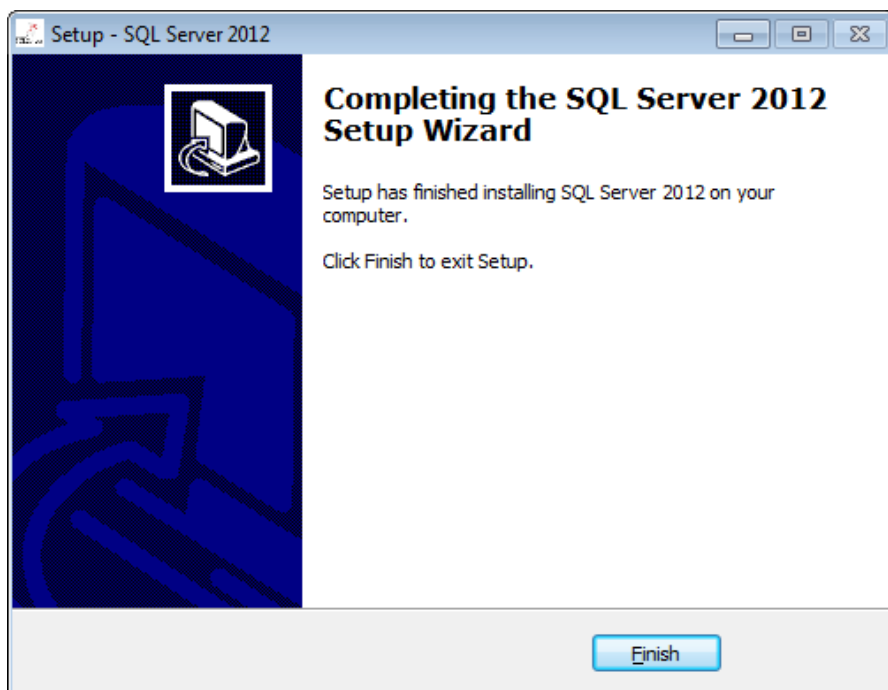
Select the database engine you wish to use. LocalDB is a lightweight version of the full SQL Server Express but is not suitable, when sharing a database between multiple Network/Windows accounts. See Appendix to ProtoCOL3 Software Installation Quick Guide in Installation->Manuals->Quick Guides. Press Next to Continue.

4



Press Install to complete the installation.

5



The installation will take a number of minutes (typically around 20). During this time a number of screens will appear and when complete the screen above will be displayed. Press Finish to end the installation. Restart the PC.

CONTACT SYNBIOSIS:  
EUROPE:  
Tel: +44 (0)1223 727125  
Email: [support@synbiosis.com](mailto:support@synbiosis.com)

USA:  
Tel: 800 686 4451/301 662 2863  
Email: [support@synbiosis.com](mailto:support@synbiosis.com)

[www.synbiosis.com](http://www.synbiosis.com)  
P3si1115